

> 载货电梯

Goods elevator

辛格林

为客户提供最安全可靠的解决方案
Provide the safest and the most reliable solutions
for you

> 货梯轿厢

Standard configuration for cabins



● S1 型

180/180

名称	Number
顶板: 镀锌钢板	Galvanized steel plate
轿壁: 镀锌钢板	Cabin wall: metal steel plate
照灯: 节能 LED 灯	Lighting energy-efficient fluorescent lamp
轿门: 镀锌钢板	Electroplated steel plate
轿底: 镀锌钢板	Electroplated steel plate



● S2 型

180/180

名称	Optional
顶板: 镀锌钢板	Galvanized steel plate
轿壁: 镀锌钢板	Cabin wall: metal steel plate
照灯: 节能 LED 灯	Lighting energy-efficient fluorescent lamp
轿门: 镀锌钢板	Electroplated steel plate
轿底: 镀锌钢板	Electroplated steel plate

> 标准操作按钮

SHUXIN



Modular 180/180
180/180
方形按钮, 点触型



300



330



360



180/180

Call panel
点触型按钮
点触型按钮

> 输入输出配置

SHUXIN



Modular 180



300



330



360



Call panel
180/180



SM-12-041型

轿厢
镜面不锈钢，镂空艺术板，意大利透光

轿壁和轿壁
镜面不锈钢，无缝铝制不锈钢

扶手
不锈钢圆管扶手

轿底
钢板彩板



SM-12-040型

轿厢
特殊金属材料框架，圆形多层次金属板透光轿厢

轿壁和轿壁
后壁中心框铝板，配置抛光石木质边框，轿壁中心板为铝板，轴间板为大理石纹饰面板

扶手
圆形水晶扶手

轿底
2mm厚PVC大理石纹饰板。



SM-12-042型

轿厢
亚克力透明框架，钢化金属装饰板，意大利板，透光，LED照明

轿壁和轿壁
钢化玻璃不锈钢，无缝铝制

扶手
无（可选）

轿底
大理石纹干锈钢板



SM-12-043型

轿厢
亚克力透明框架，钢化金属装饰板，LED照明

轿壁和轿壁
钢化玻璃不锈钢，无缝铝制

扶手
无（可选）

轿底
2mm厚PVC大理石纹饰板





● SGL2013-VE01

- ▶ 型号: SGL2013-VE01
- ▶ 尺寸: 2000*1600*2000
- ▶ 重量: 400kg
- ▶ 速度: 40km/h
- ▶ 功率: 1.5kw
- ▶ 电压: 220V

- ▶ The roof area got decorative ceiling, the set of LED light
- ▶ Back seat seat cushion, adjustable front and headrest, three-point seat belt
- ▶ Standard accessories, adjustable stainless steel seat belt
- ▶ Standard accessories
- ▶ Car bottom structure material grade: PVC composite

● SGL2013-VE02

- ▶ 型号: SGL2013-VE02
- ▶ 尺寸: 2000*1600*2000
- ▶ 重量: 400kg
- ▶ 速度: 40km/h
- ▶ 功率: 1.5kw
- ▶ 电压: 220V

- ▶ The roof area got fabric decorative cover, suspension fit, soft lighting LED lamp
- ▶ Back seat seat cushion, adjustable
- ▶ Standard accessories, three-point seat belt
- ▶ Standard accessories
- ▶ Car bottom structure material grade: PVC composite



● SGL2013-VE03

- ▶ 型号: SGL2013-VE03
- ▶ 尺寸: 2000*1600*2000
- ▶ 重量: 400kg
- ▶ 速度: 40km/h
- ▶ 功率: 1.5kw
- ▶ 电压: 220V

- ▶ The roof area got fabric decorative cover, suspension fit, soft lighting LED lamp
- ▶ Back seat seat cushion, adjustable front and rear sitting
- ▶ Standard accessories, three-point seat belt, adjustable seat belt
- ▶ Standard accessories
- ▶ Car bottom structure material grade: PVC composite

● SGL2013-VE04

- ▶ 型号: SGL2013-VE04
- ▶ 尺寸: 2000*1600*2000
- ▶ 重量: 400kg
- ▶ 速度: 40km/h
- ▶ 功率: 1.5kw
- ▶ 电压: 220V

- ▶ The roof area got fabric decorative cover, suspension fit, soft lighting LED lamp
- ▶ Back seat seat cushion, adjustable front and rear sitting
- ▶ Standard accessories, three-point seat belt, adjustable seat belt
- ▶ Standard accessories
- ▶ Car bottom structure material grade: PVC composite



● SGL-1118H

- ▶ 型号: SGL-1118H
- ▶ 尺寸: 1800*1800
- ▶ 重量: 400kg

- ▶ The roof area got fabric
- ▶ Car width: 1800mm, front and rear
- ▶ Car bottom structure material grade: PVC composite

● SGL-1127H

- ▶ 型号: SGL-1127H
- ▶ 尺寸: 1800*1800
- ▶ 重量: 400kg
- ▶ 速度: 40km/h
- ▶ 功率: 1.5kw
- ▶ 电压: 220V

- ▶ The roof area got fabric decorative cover, suspension fit, soft lighting LED lamp
- ▶ The width area: fabric decorative cover, front and rear sitting, adjustable front and rear sitting
- ▶ Car bottom structure material grade: PVC composite



> 企业文化 Enterprise culture

Humanistic care 真诚关怀

幸福的公司一直关注的员工的综合幸福指数，将员工作为企业的主人，积极关爱员工。在生产管理中尊重人、尊重人、关心员工的人文生活，提供生产保障，同时丰富的文化活动和员工的才艺，提供福利，以吸引有责任感、上进心、高素质和人性化的员工。提供福利和人性化的工作环境，吸引人才和工程技术人才。来自内心而发的对产品和服务的人，提供以专业和热情的服务。企业只有重视了人的幸福和获得感，团结一致，克服困难，聚力向前，才会有强大的生命力，为客户带来优质的产品和服务。

Deklen Company always pays attention to comprehensive quality training to help staff, make the staff as the owner of the enterprise, actively care for employees and attach great importance to the employees and respect employees in production management. It takes care of employees' culture life, benefit employees' comprehensive development, and cultivate the employees' mind with rich cultural activities. It also provides benefits for the employees who give their attention to make the staff as the owner of the enterprise, especially for those providing with high-quality products and services. Attracting and retaining talents, providing special and warm services to those who have sense of responsibility and passion for their work and devotion to their work. Only by valuing the employees' well-being, happiness and getting satisfaction and working together effectively to overcome difficulties can the enterprise have strong vitality and bring high quality products and satisfactory services to the customer.



Engineering case

> 工程案例



- ① 上海康城
- ② 上海康城
- ③ 上海康城
- ④ 上海康城



- ① 上海康城
- ② 上海康城
- ③ 上海康城
- ④ 上海康城
- ⑤ 上海康城
- ⑥ 上海康城
- ⑦ 上海康城
- ⑧ 上海康城

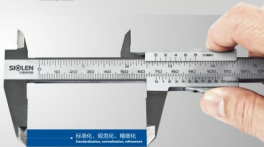
Three management

三化管理

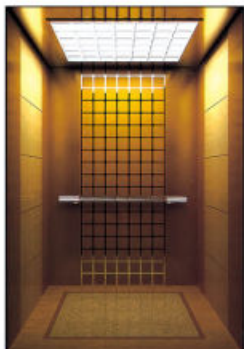


全球林电梯通过引进国内外的设备，提升效率和品质的坚实基础，全球林电梯的三化管理（标准化、规范化、精细化）可以保证产品质量、稳定、优质。全球林电梯对三化管理非常重视，因为三化管理，没有三化的管理不可能生产出好的产品。全球林电梯车间，也有现场进行精细化的三化管理，提高了产品的精细化。

Experiences of SioLen elevator is equipped with advanced equipment in the industry, being a solid foundation for efficiency and quality level. SioLen Elevator performs three management of standardization, normalization and refinement to ensure the product reliability, stability and strong. SioLen Elevator attaches great importance to standardized management as the company believes that it is responsible to produce good products without standardized management. SioLen Elevator performs standard management for world top and worldwide, achieving the maximum manufacturing efficiency.



标准化、规范化、精细化
 Standardization, normalization, refinement



SM-12-037型

轿顶
钛金镜面轿厢，云石透光板

轿壁和轿顶
钛金镜面，大理石

扶手
不锈钢圆木扶手

轿底
大理石拼花地板

SM-12-038型

轿顶
钢化玻璃轿厢，云石透光板，隐藏灯光

轿壁和轿顶
中高档装饰铝板，木饰面装饰板

扶手
方型不锈钢扶手

轿底
2mm厚PVC大理石拼花地板

SM-12-039型

轿顶
透光钢化玻璃轿厢，亚克力灯饰

轿壁和轿顶
镜面不锈钢板，大理石线条装饰板

扶手
玉（玛瑙）

轿底
承真大理石或PVC大理石拼花地板



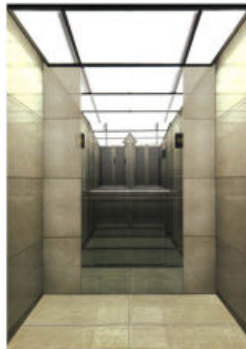
SM-12-036型

轿顶
钛金镜面轿厢，亚克力灯饰（带调律磁芯板）

轿壁和轿顶
黄檀中心板，钛金镜面饰板
铝塑板，和成钛金
再制中心板，金钛晶精雕图案
铝塑板，和成钛金

扶手
木质镜面组合扶手

轿底
2mm厚PVC大理石拼花地板





SM-12-009型

轿顶
铁氟干漆饰, LED筒灯

轿壁和轿壁
木饰面, 干漆饰胶饰条, 铁氟干漆饰

扶手
无

轿底
2mm厚PVC大理石印花地板

SM-12-010型

轿顶
铁氟干漆饰, 亚克力灯柱, LED筒灯

轿壁和轿壁
木饰面, 铁氟干漆饰, 钛金胶饰条

扶手
无

轿底
2mm厚PVC大理石印花地板

SM-12-011型

轿顶
铁氟干漆饰和铝制中空灯柱, 中间部分是亚克力灯形

轿壁和轿壁
铁红木, 花梨木和玻璃镜组合

扶手
圆管扶手

轿底
2mm厚PVC大理石印花地板



SM-12-008型

轿顶
亚克力干漆饰边板, 特大增强透光片, 中间铁氟
干漆饰, 筒灯筒罩

轿壁
铝壁, 花梨木饰面, 镶嵌圆形大理石, 下
部亚克力干漆饰面
侧壁, 花梨木饰面, 镶嵌干漆饰面

扶手
圆管扶手水晶扶手

轿底
2mm厚PVC大理石印花地板

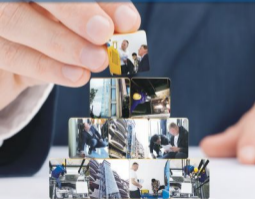


Old building equipped with an elevator

> 旧楼加装电梯

楼宇加装电梯是一项系统工程，考验地方的智慧。不仅需要电梯公司的专业能力，同时还需要制造及设计院、政府、物业公司、设计单位、施工单位等多方面的个人和配合。作为国际知名的电梯企业之一，蒂升电梯始终心系社会需求，对楼宇加装电梯做了深入研讨，并积累了丰富的经验。

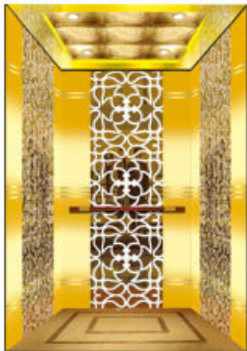
As a world-class elevator manufacturer, Siulen has a rich professional engineering, marketing services capacity, needing professional technologies of elevator company as well as cooperation and participation of government departments, units at all levels, real estate, property management companies, design units, construction units and so on. We have accumulated rich experience. Siulen elevator pays attention to the social demand, has made deep research on the installation of elevators in buildings, and has accumulated rich experience.



Product advantage

> 产品优势

产品优势	节能环保	安全可靠	运行平稳	噪音低	使用寿命长	维护方便	售后服务
产品优势	节能环保	安全可靠	运行平稳	噪音低	使用寿命长	维护方便	售后服务
产品优势	节能环保	安全可靠	运行平稳	噪音低	使用寿命长	维护方便	售后服务
SIULEN 蒂升电梯							
技术优势 Technical advantage							
产品优势	节能环保	安全可靠	运行平稳	噪音低	使用寿命长	维护方便	售后服务
产品优势	节能环保	安全可靠	运行平稳	噪音低	使用寿命长	维护方便	售后服务



SM-12-025型

轿顶
钛金不锈钢, 变更为可选, 嵌灯

侧壁和后壁
珠网钛金饰面, 发纹钛金球合

扶手
钛金钛铝圆管扶手

轿底
2mm厚PVC大理石纹地板

SM-12-026型

轿顶
钛金发纹边线, 透光云石

侧壁和后壁
钛金珠网不锈钢, 钛金珠网不锈钢饰面,
磨钛金发纹不锈钢

扶手
无 (可选)

轿底
2mm厚大理石纹石材地板

SM-12-027型

轿顶
钛金珠网, 钛金饰面, 灯带

侧壁和后壁
钛金珠网饰面, 半透明珠网

扶手
不锈钢圆管扶手

轿底
2mm厚大理石纹石材地板



SM-12-024型

轿顶
钛金珠网不锈钢边线, 中心为半圆造型加嵌灯

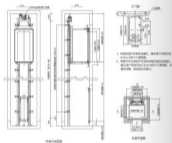
侧壁和后壁
中心线, 珠网, 饰面
珠网线, 钛金发纹不锈钢

扶手
圆管与钛金球合掌管扶手

轿底
2mm厚PVC大理石纹地板



› 別墅電梯土建圖(背包式) Construction Layout of Villa Elevator(Backpack)



- B:
1. 機房位於井道後, 井道深 2000;
 2. 井道中應設置 2 道 1000x1000 玻璃門。

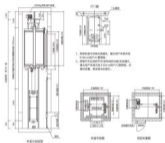
機房尺寸 井道深度 井道寬度

1.2	2000	900
-----	------	-----

④ 別墅電梯參數表 Parameter List of Villa Elevator

型號 Model Number	機房尺寸 RM Size	井道尺寸 SH (D1 x D2 x H)	門尺寸 D1 x D2	井道尺寸 SH (D1 x D2)	井道尺寸 SH (D1 x D2)	最大載重 Max Load
V10-200	2000	2000 x 1000 x 2700	900*710	2000 x 2000	2000 x 1000	1.2T
V10-300	3000	2000 x 1000 x 2700	900*710	2000 x 2000	2000 x 1000	1.5T
V10-400	4000	2000 x 1000 x 2700	900*710	2000 x 2000	2000 x 1000	1.7T

› 別墅電梯土建圖(非背包式) Construction Layout of Villa Elevator(Non-Backpack)



- B:
1. 機房位於井道後, 井道深 2000;
 2. 井道中應設置 2 道 1000x1000 玻璃門, 機房中應設置 2 道 1000x1000 玻璃門, 3. 井道深, 井道寬度。

機房尺寸 井道深度 井道寬度

1.2	2000	900
-----	------	-----

④ 別墅電梯參數表 Parameter List of Villa Elevator

型號 Model Number	機房尺寸 RM Size	井道尺寸 SH (D1 x D2 x H)	門尺寸 D1 x D2	井道尺寸 SH (D1 x D2)	井道尺寸 SH (D1 x D2)	最大載重 Max Load
V10-200	2000	2000 x 1000 x 2700	900*710	2000 x 2000	1700 x 1000	1.2T
V10-300	3000	2000 x 1000 x 2700	900*710	2000 x 2000	1700 x 1000	1.5T
V10-400	4000	2000 x 1000 x 2700	900*710	2000 x 2000	1700 x 1000	1.7T



SM-12-005型

轿顶
木质格栅、透光板、LED筒灯

轿壁和轿壁
铁红木饰面、整面镜

扶手
实木与钛金管铝合扶手

轿底
2mm厚PVC大理石纹饰面板

SM-12-006型

轿顶
铝质不锈钢边饰、铁质不锈钢饰板、LED灯

轿壁和轿壁
木饰面、不锈钢边饰条、铁质不锈钢饰板

扶手
实（可选）

轿底
2mm厚PVC大理石纹饰面板

SM-12-007型

轿顶
木质格栅饰、玉石灯片

轿壁和轿壁
实木饰面加层板、实木线条、整面镜、铁人以靠
背高靠之感

扶手
实木与钛金铝合金管扶手

轿底
2mm厚PVC大理石纹饰板



SM-12-004型

轿顶
不锈钢金属透光板与铁质格栅透光板

轿壁和轿壁
中心板、木质饰面
辅助板、铁质不锈钢

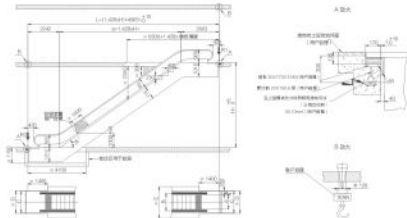
扶手
钛金管铝合扶手

轿底
2mm厚PVC大理石纹饰板



下自动扶梯土建图(室内)

Construction Layout of TR Escalator (Indoor)



自动扶梯参数表 Parameter list of escalator

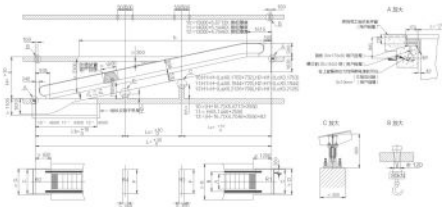
梯种	梯外高度	净高	总提升高 (xN)	梯段总长 (xN)	梯种	梯外高度	净高	总提升高 (xN)	梯段总长 (xN)
	H ₁ (m)	H ₂ (m)	H ₃	L ₁ (m)		H ₁ (m)	H ₂ (m)	H ₃	L ₁ (m)
TF800	2810	94	42	41	TF800	2810	94	48	41
	2810	97	48	42		2810	95	51	48
	4000	80	48	45	5.5	4000	63	55	51
	4500	84	51	47		4500	66	58	54
	5800	87	53	50		5800	73	61	57
	5800	73	58	52	6	5800	73	64	50
	6800	73	58	55	8	6800	78	68	52

层号	层号	梯号	梯号			说明
			TF800	TF800	TF1000	
站厅层	站厅层	站厅层	A	800	800	800
站厅层	站厅层	站厅层	B	1000	1000	1000
站厅层	站厅层	站厅层	C	1100	1100	1100
站厅层	站厅层	站厅层	D	1200	1400	1400
站厅层	站厅层	站厅层	E	1600	2000	2200

注: 1. 本图适用于45度以下内装扶梯的土建图之用。
2. 总提升高是指站厅层、楼层上层的提升高度之和。
3. 扶梯的总提升高是指站厅层、楼层上层的提升高度之和。
4. 厅内净空尺寸, 个别的厅内净空数据, 按实际数据, 按实际数据。

TR自动人行道土建图(室内)

Construction Layout of TR Automatic Sidewalk(Indoor)



自动人行道参数表 Parameter list of automatic sidewalk

梯种	梯外高度	净高	总提升高 (xN)	梯段总长 (xN)	梯种	梯外高度	净高	总提升高 (xN)	梯段总长 (xN)
	H ₁ (m)	H ₂ (m)	H ₃	L ₁ (m)		H ₁ (m)	H ₂ (m)	H ₃	L ₁ (m)
ST	1207	2178	-	-	11	1440	2428	-	-
	2178	4813	1	1.0	12	1601	2683	-	-
	4824	6008	1	1.0	13	1810	3008	1	1.0

型号	层号	梯号	梯号			总提升		
			TF800	TF1000	TF1300	站厅层提升高 (xN)	楼层提升高 (xN)	总提升高 (xN)
站厅层	站厅层	站厅层	A	800	1000	800+1000	800+1000	800+1000
站厅层	站厅层	站厅层	B	1000	1200	1000+1200	1000+1200	1000+1200
站厅层	站厅层	站厅层	C	1400	1800	1400+1800	1400+1800	1400+1800
站厅层	站厅层	站厅层	D	1600	2000	1600+2000	1600+2000	1600+2000
站厅层	站厅层	站厅层	E	2000	2200	2000+2200	2000+2200	2000+2200

- 注: 1. 本图适用于45度以下内装自动人行道的土建图之用。
2. 总提升高是指站厅层、楼层上层的提升高度之和。
3. 扶梯的总提升高是指站厅层、楼层上层的提升高度之和。
4. 厅内净空尺寸, 个别的厅内净空数据, 按实际数据, 按实际数据。

After-sale service

> 售后服务

“以客户为中心”这是中核电梯的核心价值，也是我们的产品与服务宗旨。中核电梯拥有专业的售后服务团队，客户有任何投诉，我们都会第一时间解决客户问题，是我们的责任。中核电梯是第一个电话受理，客户打电话过来是第一时间，我们第一时间接单，客户打电话过来我们第一时间接单，任何售后问题我们第一时间解决，我们第一时间接单，我们第一时间接单，我们第一时间接单。

我们将为每个客户提供快速优质的售后服务。

After-Service for the satisfied customer of "Customer-oriented" with high quality products containing the core service. After the customer report the after-sales problem, the customer focus complaints, we shall be solve the problem for the customer with utmost the responsibility. The company offers in the principle of first phone call customer able to offer providing the customer personal attention for the problem in the whole process and the customer shall receive with satisfaction to confirm. Any after-sale problem shall be solved in the first time and the responsibility shall be the one who firstly responded for they will be a great will quality warranty. In the end it shall be able to see the every complaint resolution of customer like a chance to improve customer's loyalty.





SM-12-017型

轿顶
钛金镀层LED灯带，中部钛金片

轿壁和轿壁
中心板，钛金镀层
辐射板，木质饰面配钛金装饰，装饰线条

扶手
钛金与原木组合扶手

轿底
大理石拼花地板

SM-12-018型

轿顶
钛金镀层铝梁，美灯格网，钛金透光片

轿壁
实木饰面板，镜翼改革分板

扶手
无（可选）

轿底
2mm厚PVC大理石纹拼花地板

SM-12-019型

轿顶
不锈钢饰面铝梁和钛金有机透光板

轿壁和轿壁
钛金半字型和木质边板，艺术型表面
衬型为金属漆衬功能板衬面，方体造型

扶手
无（可选）

轿底
2mm厚PVC大理石纹地板



SM-12-016型

轿顶
镜面不锈钢板，加钛金有机透光板，LED灯带

轿壁和轿壁
木质饰面，镜翼不锈钢，钛金条点阵

扶手
不锈钢金属条扶手

轿底
2mm厚PVC大理石地板





SM-12-029型

装潢
全珠光金属烤漆面板、磨砂玻璃、装饰大理石纹铝
氟层

轿壁
正中央为高低纹浮雕玻璃墙，两侧中间为钛金属蒙
板，辅助层为拉丝钛金属

扶手
磨砂水晶方彩扶手

轿底
2mm厚PVC大理石纹拼花地板

SM-12-030型

装潢
镜面边框、亚克力灯饰、磨砂灯饰

轿壁和轿顶
镜面饰层不锈钢板、拉丝金色

扶手
不锈钢方管扶手

轿底
2mm厚PVC大理石纹拼花板

SM-12-031型

装潢
不锈钢镜面饰层板和白色装饰板

轿壁和轿顶
中心板：拉丝磨砂不锈钢
辅助板：镜面饰层

扶手
亮（可选）

轿底
2mm厚PVC大理石纹拼花板



SM-12-028型

装潢
钛金属镜面不锈钢板和白色装饰透光板

轿壁和轿顶
镜面饰层钛金属

扶手
钛金属透明扶手

轿底
2mm厚PVC大理石纹拼花地板





SM-12-033型

轿厢
钛金属框架，宽幅异形彩色有机透光板的透光格栅设计

侧壁和裙壁
钛金、艺术图案雕刻

扶手
无（可选）

轿底
2mm厚PVC大理石纹地板或大理石拼花



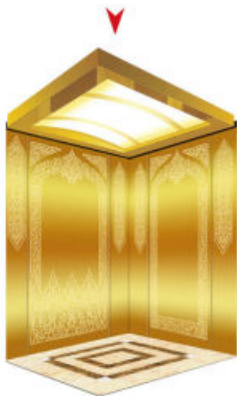
SM-12-032型

轿厢
金钛金属烤漆框架，精工细磨，中间透明玻璃

侧壁和裙壁
中心板：钛金属雕刻工艺不锈钢
辅助板：钛金属雕刻工艺不锈钢

扶手
钛金发纹不锈钢雕纹手

轿底
2mm厚PVC大理石纹地板或大理石拼花



SM-12-034型

轿厢
钛金属框架，宽幅透明灯杆，弧形自然有机透光板

侧壁和裙壁
中心板：艺术玻璃，钛金属穿孔格栅
辅助板：钛金属穿孔格栅

扶手
钛金不锈钢雕纹扶手

轿底
2mm厚PVC大理石纹地板或地毯



SM-12-035型

轿厢
金钛金属烤漆框架，亚克力透光板

侧壁和裙壁
钛金穿孔板、雕刻钛金不锈钢

扶手
无（可选）

轿底
2mm厚PVC大理石纹地板或地毯



> 技术领先

Outstanding technology



扶手入口 Handrail inlet

美观、耐用、防撞。扶手入口采用现代化设计并采用进口合金材质，采用圆角、垂直边及之地面无缝隙的构造避免刮伤风险。

The entrance is fully in line with the leading edge of the handrail, elegant, finished and reinforced to ensure handrail inlet and avoid damage. It is perfect to be used both in the water appearance, to display the well-maintained appearance of the connecting construction.

自动加速 Automatic rolling

PLC智能控制自动加速系统，实现了在乘客经过时自动加速并维持恒速行驶，不仅缩短了自动驾驶行程，而且可以显著降低能耗。

PLC control automatic rolling and regulating system built, the automatic rolling along the route can automatically adjusting the running process of the escalator. It not only reduces the daily power consumption and fuel, but also prolongs the service life of the escalator.



滚轴内置梯级链 Steep chain-roller inlet

滚轴内置专门设计的滚轴链梯级，能有效降低梯级启动时的噪音，避免产生不必要的摩擦。

The roller has been specially installed in the gap to reduce the noise of the step chain. It can effectively reduce the friction of the roller during the starting process.

故障显示器 Fault display

故障显示器采用 LED 显示屏技术，确保在第一时间发现和报警，故障的修复更便捷，大大提高了维修保养效率。当发生故障时，显示屏会显示故障代码，方便维修人员进行故障排除。

When a fault occurs, the LED display will be displayed to be detected system. It can save the time and cost to solve the problem within the shortest time possible. It is easy to identify the fault and maintenance efficiency.



立式牵引机 Vertical type traction machine

垂直牵引的牵引机紧凑小巧，确保梯级链条张紧，避免产生不必要的摩擦。

It has the compact engagement and the friction reduction, it guarantees the extremely low noise.

梯级照明灯 Demarcation lamp

梯级照明灯采用 LED 光源，安装在梯级下方，采用高亮度的 LED 光源，确保乘客能够清晰看到梯级边缘，提高乘客的安全。

The green fluorescent lamp has been installed under the step and lower step area. When there is the staggered starting of the connecting step, the green fluorescent light will become on to help the passengers clearly the step and not to be confused with the adjacent connecting step.



> 功能选配

Optional function

运行方向标识 Running direction indication

运行方向标识采用 LED 光源，安装在扶手带入口上方，采用圆角、垂直边及之地面无缝隙的构造避免刮伤风险。

The running direction is clear and for the safety of the passenger. It is perfect to be used both in the water appearance, to display the well-maintained appearance of the connecting construction.



扶手照明 Handrail illumination

扶手照明采用 LED 光源，安装在扶手带入口上方，采用圆角、垂直边及之地面无缝隙的构造避免刮伤风险。

The handrail illumination has been installed in the handrail support. The gentle light adds to passenger's waiting escalator.



斜梯罩 Slanted handrail

斜梯罩采用 LED 光源，安装在扶手带入口上方，采用圆角、垂直边及之地面无缝隙的构造避免刮伤风险。

It is perfect to be used both in the water appearance, to display the well-maintained appearance of the connecting construction.



自动启动停止 Automatic start/stop

自动启动停止采用 LED 光源，安装在扶手带入口上方，采用圆角、垂直边及之地面无缝隙的构造避免刮伤风险。

The automatic stop system which is used in the glass can obtain a transparent glass entrance in the floor plate. This kind of automatic stop system can be used in the passenger area. It will be more safe for the passenger when the escalator is stopped.



梯级照明 Step lighting

梯级照明采用 LED 光源，安装在梯级下方，采用高亮度的 LED 光源，确保乘客能够清晰看到梯级边缘，提高乘客的安全。

The step lighting is used in the gap to reduce the noise of the step chain. It can effectively reduce the friction of the roller during the starting process.



盲道提示 Blind point提示

盲道提示采用 LED 光源，安装在扶手带入口上方，采用圆角、垂直边及之地面无缝隙的构造避免刮伤风险。

The blind point, which is used in the floor plate, can obtain a transparent glass entrance in the floor plate. This kind of automatic stop system can be used in the passenger area. It will be more safe for the passenger when the escalator is stopped.



变频牵引技术 Frequency converter

变频牵引技术采用 LED 光源，安装在扶手带入口上方，采用圆角、垂直边及之地面无缝隙的构造避免刮伤风险。

When there is the staggered starting of the connecting step, the green fluorescent light will become on to help the passengers clearly the step and not to be confused with the adjacent connecting step.



防滑踏板 Slipping board

防滑踏板采用 LED 光源，安装在扶手带入口上方，采用圆角、垂直边及之地面无缝隙的构造避免刮伤风险。

It can save the time and cost to solve the problem within the shortest time possible. It is easy to identify the fault and maintenance efficiency.



滴水帘装置 Drip water device

滴水帘装置采用 LED 光源，安装在扶手带入口上方，采用圆角、垂直边及之地面无缝隙的构造避免刮伤风险。

It is perfect to be used both in the water appearance, to display the well-maintained appearance of the connecting construction.



盲道提示 Blind point提示

盲道提示采用 LED 光源，安装在扶手带入口上方，采用圆角、垂直边及之地面无缝隙的构造避免刮伤风险。

The blind point, which is used in the floor plate, can obtain a transparent glass entrance in the floor plate. This kind of automatic stop system can be used in the passenger area. It will be more safe for the passenger when the escalator is stopped.



选配方案



> 踏板 Pallets



蓝色板
Blue pallet



不锈钢踏板(宽型) (Stainless steel pallet (wide))



不锈钢踏板(窄型) (Stainless steel pallet (narrow))



铝踏板
Aluminum High



不锈钢踏板
Stainless steel step

> 梯级 Steps

> 扶手带颜色 Handrail colour



蓝
Blue



绿
Handrail dark green



浅绿色
Light Green



灰
Grey



红
Red



橙
Orange

SOLEN

选配方案

> 自动扶梯

Escalator

辛格林

源于瑞典，始于1904年

Signen comes from Sweden, dates from 1904



> 自动人行道

Automatic sidewalk

辛格林

源于瑞典，始于1904年

Signen comes from Sweden, dates from 1904

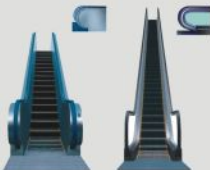
> 自动扶梯样机 Escalator model machine

SIEMENS

辛格林自动扶梯设计秉承简约、流畅、高品质的设计理念，采用模块化设计，便于安装和维护。其独特的驱动系统，确保了运行的稳定性和安全性。辛格林自动扶梯采用先进的材料，确保了其耐用性和环保性。辛格林自动扶梯的设计，充分考虑了乘客的安全和舒适。辛格林自动扶梯的设计，体现了对细节的关注和对品质的追求。

Signen escalator model machine meets the different requirements from local customer based on its superior projects, the practical and flexible design. The optimized utilization of microcomputer variable frequency technology (VFD), guarantees model tests the advanced manufacturing technology being about the most public, secure, comfortable Signen escalator model. The low energy saving and the convenient rapid maintenance.

In superior performance design, the firm and integrated frame and parts services readily conform with the standard such as the local environmental protection and the requirements.



普通扶梯
Preset city escalator

长距离扶梯
Long-reach escalator

> 自动人行道样机 Moving walk model machine

SIEMENS



倾斜自动人行道(普通型)
Inclined moving walk (ordinary)

倾斜设置楼梯自动人行道
Inclined stairs on moving walk

水平自动人行道
Horizontal moving walk

辛格林自动人行道设计秉承了简约、流畅、高品质的设计理念，采用模块化设计，便于安装和维护。其独特的驱动系统，确保了运行的稳定性和安全性。辛格林自动人行道采用先进的材料，确保了其耐用性和环保性。辛格林自动人行道的设计，充分考虑了乘客的安全和舒适。辛格林自动人行道的设计，体现了对细节的关注和对品质的追求。

Signen escalator moving walk represent the leading manufacture in the industry. The widely used, fashionable and innovative structure design and model elegant and significant to the color appearance of the products. It displays the robustness and imposing manner to its curving architecture. It is an integral whole between the aesthetics and walk and the building. Each design more believes in the others' company.

The practical value and mature engineering of Signen escalator moving walk are full of the future charm. It can harmoniously merge with the modern metropolitan architecture and the indoor decoration. It completely deduces the design ideas of self-reliant Signen escalator technology, the remarkable safety and reliability, saved it energy saving, the used concise and unobtrusive.

Corporate Culture

> 企业文化

Bear the great trust for life,

create a beautiful life! 承担社会责任，创造美好生活!

> 我们的使命
Our vision

成为最值得信赖的世界品牌!
Be the most trustworthy global brand!

> 我们的事业宗旨
Our vision

以人为本，共创健康安全、舒适的电梯新世界!
Human-oriented, jointly creating a safe and comfortable world of elevators!

> 我们的价值观
Our core values

品质卓越，持续创新!
Superior quality, continuous innovation!

> 我们的客户观
Our greatest intention

以客户为中心!
Customer-oriented!

> 我们的合作伙伴
Our partners

诚信+专业+共赢!
Honesty + professionalism + win-win!

> 我们的为人观
Our attitude to work

真诚+勇于担当!
Sincerity + responsibility! Sincerity + responsibility!

> 我们的工作观
Our work style

严谨规范+精益求精!
Rigorous and standardized + perfectionism!





Creative team

> 研发团队

SILOEN
卓格林电梯



卓格林电梯——以人为本，尊重每个人，是卓格林电梯企业文化的重要组成部分。我们拥有全球最优秀的人才，他们来自世界各地，拥有不同的文化背景，但都拥有共同的使命：为客户提供最优质的产品和服务。我们的研发团队是这一使命的践行者，他们不断探索和创新，为客户提供更智能、更环保、更安全的电梯解决方案。

卓格林电梯的研发团队由来自全球各地的顶尖人才组成，他们拥有深厚的专业知识和丰富的行业经验。我们的研发团队涵盖了电梯的各个方面，包括机械设计、电气控制、软件开发、系统集成等。我们的研发团队始终秉承“以人为本”的理念，关注客户的需求和体验，为客户提供个性化的解决方案。我们的研发团队还积极参与行业交流和合作，不断提升我们的技术水平和创新能力。我们的研发团队是卓格林电梯的核心竞争力，也是我们实现可持续发展的关键。

The excellent work culture, the inspiring executive team, and the management with rich experience have high team cohesion. Employees of various and abundant backgrounds and cultures and the experience of working together in the industry in research and development contribute to the world about 100 talents experts have successfully developed the core systems and components for elevators and escalators, and the knowledge has been shared and transferred by the world leading technology experts with close cooperative relationship.

Siolen Technology Center is large which including Research and Development Department, Technology Department, Quality Department, Customer Service Department and Engineering Department. The support of various functions through all levels including marketing, design, manufacturing, installation, maintenance and after-sales support has a strong ability of mass customer processing of elevators. After the elevators leave the factory, the research and development personnel can immediately find the production, maintenance and customer complaint about the product, constantly gather the problem and optimize the structure, and the development can also ensure further advanced control of the product.

The product elevators are successfully researched and developed in Siolen Research and Development Center. The "Silence" product research and development is implemented with excellent elevator maintenance for Siolen with good operation. The team work for the Elevator E-Team treatment and responsible details of the elevator in all aspects and gives excellent cooperation. Today with the highly experience of the personnel who possessed the "Elevator" design and operating award of the Year - 2016 the product that raised elevators with functional quality.

Development course

> 发展历程

中核科工集团创立于1984年，多年来致力于汽车、化学、机械、交通运输以及电力系统的研发和创新。

Siglen Industry founded in 1984, has been devoted to research and development of automobile, chemistry, machinery, transportation, and power system for the past.



2015
 2015年，中核科工集团完成资产重组，成为中核集团全资子公司。集团更名为中核科工集团，标志着集团进入全新的发展阶段。

2008年，中核科工集团完成资产重组，成为中核集团全资子公司。集团更名为中核科工集团，标志着集团进入全新的发展阶段。

2004年，中核科工集团完成资产重组，成为中核集团全资子公司。集团更名为中核科工集团，标志着集团进入全新的发展阶段。

2006年，中核科工集团完成资产重组，成为中核集团全资子公司。集团更名为中核科工集团，标志着集团进入全新的发展阶段。

2005年，中核科工集团完成资产重组，成为中核集团全资子公司。集团更名为中核科工集团，标志着集团进入全新的发展阶段。

2007年，中核科工集团完成资产重组，成为中核集团全资子公司。集团更名为中核科工集团，标志着集团进入全新的发展阶段。

2003年，中核科工集团完成资产重组，成为中核集团全资子公司。集团更名为中核科工集团，标志着集团进入全新的发展阶段。

2002年，中核科工集团完成资产重组，成为中核集团全资子公司。集团更名为中核科工集团，标志着集团进入全新的发展阶段。

2001年，中核科工集团完成资产重组，成为中核集团全资子公司。集团更名为中核科工集团，标志着集团进入全新的发展阶段。



SM-12-013型

轿厢
金色镜面不锈钢轿厢

轿壁和轿壁
中心柱，钛金镜面
辅助柱，木质饰面

扶手
圆木与钛金圆管扶手

轿底
2mm厚PVC大理石纹地板



SM-12-012型

轿厢
钛金镜面不锈钢和钛金饰面有机板

轿壁和轿壁
木质饰面，中间钛金镜面钛金

扶手
红木钛金圆管扶手

轿底
2mm厚PVC大理石纹地板

SM-12-014型

轿厢
钛金镜面，有机玻璃灯罩

轿壁和轿壁
中心柱，木质饰面
辅助柱，钛金、钛金

扶手
圆木与钛金圆管扶手

轿底
2mm厚PVC大理石纹地板



SM-12-015型

轿厢
钛金镜面不锈钢边柜，艺术玻璃

轿壁和轿壁
中心柱，钛金、木质艺术柜
两侧中心柱为木质饰面
辅助柱，钛金镜面不锈钢，木质饰面

扶手
圆木与钛金圆管扶手

轿底
2mm厚PVC大理石纹地板





SM-12-021型

轿顶
 钛金镀氟不锈钢, 亚克力灯柱

侧壁和底壁
 钛金镀氟不锈钢, 钢化玻璃

扶手
 钛金镀氟不锈钢扶手

轿底
 2mm厚PVC大理石纹地板

SM-12-022型

轿顶
 镜面不锈钢拉丝机械透光板

侧壁和底壁
 中心板: 木质饰面与钛金不锈钢组合
 辅助板: 镜面不锈钢

扶手
 木质扶手

轿底
 2mm厚PVC大理石纹地板

SM-12-023型

轿顶
 镜面不锈钢, 钢化玻璃组合, 亚克力灯板 (自亮)

侧壁和底壁
 钢化玻璃, 钛金不锈钢组合

扶手
 镜面不锈钢钛金扶手

轿底
 2mm厚PVC大理石纹地板

SM-12-020型

轿顶
 木质饰面, 亚克力灯板

侧壁和底壁
 木质饰面, 立体造型钛金玻璃

扶手
 钛金木质扶手

轿底
 2mm厚PVC大理石纹地板



Social responsibility

> 社会责任



EXPERIENCE YOUR NOBLE LIFE THROUGH THE
OUTSTANDING LIFT PROPERTIES

體驗尊貴 享給優美人生

SIJLEN 辛格林電梯



安全可靠，品質保證 Safe and reliable, quality assurance

SIJLEN 辛格林電梯，採用最先進的安全系統，確保乘客的安全。The safety system of SIJLEN is the most advanced and reliable in the world. The safety is guaranteed.



先進科技，平穩舒適 Top technology, smooth riding

SIJLEN 辛格林電梯，採用最先進的平穩舒適系統，確保乘客的舒適。The advanced top technology of SIJLEN ensures smooth and comfortable riding. The advanced top technology of SIJLEN ensures smooth and comfortable riding.



服務無微不至 First-class high-quality service

SIJLEN 辛格林電梯，提供最先進的客戶服務。The advanced top technology of SIJLEN ensures smooth and comfortable riding.

▶ **不銹鋼精麗系列** Stainless Steel Car Series



● **SSC-1342H**

- ▶ SSC-1342H (1000kg, 1300mm, 2.00m)
- ▶ SSC-1342H (1000kg, 1300mm, 2.00m)
- ▶ SSC-1342H (1000kg, 1300mm, 2.00m)
- ▶ SSC-1342H (1000kg, 1300mm, 2.00m)
- ▶ SSC-1342H (1000kg, 1300mm, 2.00m)

- ▶ Can meet various finished stainless steel, brushed, brushed stainless steel, mirror
- ▶ Black wall, Teflon/teflon/teflon stainless steel
- ▶ Tempered glass, laminated glass
- ▶ Tempered/teflon/teflon stainless steel
- ▶ Tempered/teflon/teflon stainless steel
- ▶ Tempered/teflon/teflon stainless steel
- ▶ Can be used in various environments, such as PTC, hospital



● **SSC-1408**

- ▶ SSC-1408 (1000kg, 1400mm, 2.00m)
- ▶ SSC-1408 (1000kg, 1400mm, 2.00m)
- ▶ SSC-1408 (1000kg, 1400mm, 2.00m)
- ▶ SSC-1408 (1000kg, 1400mm, 2.00m)
- ▶ SSC-1408 (1000kg, 1400mm, 2.00m)
- ▶ SSC-1408 (1000kg, 1400mm, 2.00m)

- ▶ Can meet various finished stainless steel, brushed, brushed stainless steel, mirror
- ▶ Black wall, Teflon/teflon/teflon stainless steel
- ▶ Tempered glass, laminated glass
- ▶ Tempered/teflon/teflon stainless steel
- ▶ Tempered/teflon/teflon stainless steel
- ▶ Can be used in various environments, such as PTC, hospital
- ▶ Can be used in various environments, such as PTC, hospital

> 汽车电梯

Car elevator



2 汽车梯参数表 Parameter list of stretcher

名称	Standard
轿底: 装饰轿底	Cabing carot anal plate
轿壁: 装饰轿壁	Cabing wall covered metal plate
轿灯: 节能 LED 灯	Lighting (low energy) fluorescent lamp
轿门: 装饰轿门	Decorated metal plate
轿顶: 装饰轿顶	Plasterboard with metal plate

> 汽车电梯的特点 Feature of the automotive elevator

轿厢外观设计

轿厢采用天然气、钢化玻璃装饰。

The elevator can use natural gas and tempered glass for decoration.



轿厢内衬层

轿厢内衬层采用全不锈钢装饰，轿厢内衬层汽车防撞。

The inner lining of the car is decorated with all stainless steel. The inner lining of the car has anti-collision protection for cars.



轿厢内控制柜及显示屏

轿厢内控制柜及显示屏采用钢化玻璃装饰。

The inner control cabinet and display screen are decorated with tempered glass.



轿厢门防撞传感器

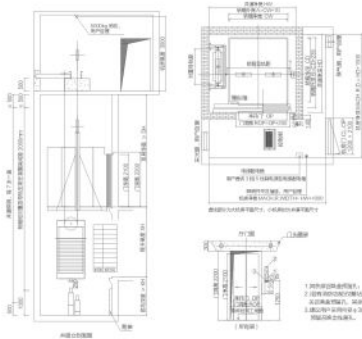
轿厢门防撞传感器，增加了汽车防撞。

The elevator door has a door anti-collision sensor to increase the anti-collision of the car.



> 载货电梯土建布置图

Civil engineering drawings



1. 轿厢导轨应垂直于轿厢。
2. 轿厢导轨应垂直于轿厢导轨架。
3. 轿厢导轨应垂直于轿厢导轨架。

2 载货电梯参数表 Parameter list of goods elevator

电梯型号	额定载重量 kg/m ²	额定速度 m/s	轿厢尺寸 CW×D×HG	井道尺寸 OP×OPH	轿厢尺寸 HW×HD	最大允许 速度m/s	载重量	轿厢净高CH	轿厢深度GH
TH1000	1000	2.5	1400×1500×2200	1600×1700	2300×2300	2.4	1000	4100	1300
		1.8	1400×1500×2200	1600×1700	2000×2000	1.300	1000	4100	1300
TH2000	2000	3.0	1800×2100×2300	2000×2100	2800×2800	4.2	2000	4300	1300
		1.8	1800×2100×2300	2000×2100	2500×2500	1.300	2000	4300	1420
TH4000	4000	3.0	2200×2500×2300	2400×2500	3400×3200	3.0	4000	4500	1420
		1.8	2200×2500×2300	2400×2500	3100×3100	1.300	4000	4500	1420
TH6000	6000	3.0	3400×3000×2300	3600×3100	4800×4300	3.0	6000	4800	1420
		1.8	3400×3000×2300	3600×3100	4500×4300	1.300	6000	4800	1420

1. 本图仅供参考，不作为法律依据。
2. 轿厢尺寸应满足轿厢导轨架的要求。

> 客户自理工程 Customer care project

梯况工程

1. 检查电梯的梯况, 进行例行的检查及保养。
2. 检查梯况的保养记录。
3. 检查电梯的梯况, 检查是否有任何故障。
4. 检查电梯的梯况, 检查是否有任何故障。
5. 检查电梯的梯况, 检查是否有任何故障。
6. 检查电梯的梯况, 检查是否有任何故障。

梯况工程

1. 检查电梯的梯况, 检查是否有任何故障。
2. 检查电梯的梯况, 检查是否有任何故障。
3. 检查电梯的梯况, 检查是否有任何故障。
4. 检查电梯的梯况, 检查是否有任何故障。
5. 检查电梯的梯况, 检查是否有任何故障。
6. 检查电梯的梯况, 检查是否有任何故障。

梯况工程

1. 检查电梯的梯况, 检查是否有任何故障。
2. 检查电梯的梯况, 检查是否有任何故障。
3. 检查电梯的梯况, 检查是否有任何故障。

梯况工程

1. 检查电梯的梯况, 检查是否有任何故障。
2. 检查电梯的梯况, 检查是否有任何故障。
3. 检查电梯的梯况, 检查是否有任何故障。

梯况工程

1. 检查电梯的梯况, 检查是否有任何故障。
2. 检查电梯的梯况, 检查是否有任何故障。
3. 检查电梯的梯况, 检查是否有任何故障。
4. 检查电梯的梯况, 检查是否有任何故障。

梯况工程

1. 检查电梯的梯况, 检查是否有任何故障。
2. 检查电梯的梯况, 检查是否有任何故障。
3. 检查电梯的梯况, 检查是否有任何故障。
4. 检查电梯的梯况, 检查是否有任何故障。

> 十大免费服务 Ten free service

免费梯况检查, 免费维修保养, 免费上门安装, 免费上门调试, 免费上门维修, 免费上门保养, 免费上门检测, 免费上门验收, 免费上门培训, 免费上门指导。

辛格林电梯(中国)有限公司

地址: 佛山市南海区狮山镇小塘三井西樵工业园

电话: 0757-86029429 传真: 0757-66868899

网址: www.siglen.com

邮箱: siglen@siglen.com

SIGLEN ELEVATOR (CHINA) CO., LTD.

ADD: Industrial Park, Se-Po-ai-cu, Westing, Shaohan Town, Nanhai District, Foshan City.

Tel: +86-757-66829429 Fax: +86-757-66868899

<http://www.siglen.com>

E-mail: siglen@siglen.com

全国免费服务热线 > 400-100-1778

辛格林电梯(中国)有限公司
辛格林电梯(中国)有限公司
辛格林电梯(中国)有限公司



二维码



二维码



二维码

SIGLEN ELEVATOR (CHINA) CO., LTD.



SIGLEN Escalator/ Automatic sidewalk

> 自动扶梯 / 自动人行道系列

SIGLEN
辛格林电梯